

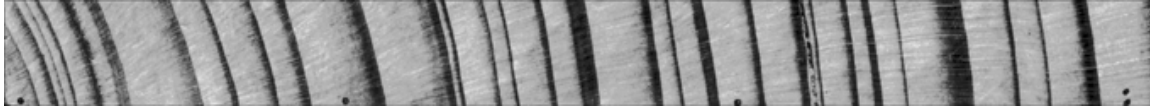
Tree Slice Observation

Materials:

Tree slice or stump.

Rulers

(Optional: digital camera)



Each dark line indicates a year of growth.

Procedure:

Obtain an actual slice of a tree trunk (firewood makes a good source) and make a diagram of the tree rings.

Using the tree trunk slice measure the thickness of each growth ring.

Once you have measured the thickness of each ring, make a graph of the growth of the tree on a yearly basis.

Measure the average radius thickness of the tree slice and using the number of rings, calculate the average growth rate of the tree.

The graph is also a measure of the growth conditions for that year.

As the space between the dark rings gets bigger the better the growth season was.

If your tree slice was cut this year, going back add years to your graph.

You could also do the same experiment using a tree borer. Care needs to be taken while using the borer. You could contact your local forestry service for more information on use, safety, and possibly borrowing tree borers.